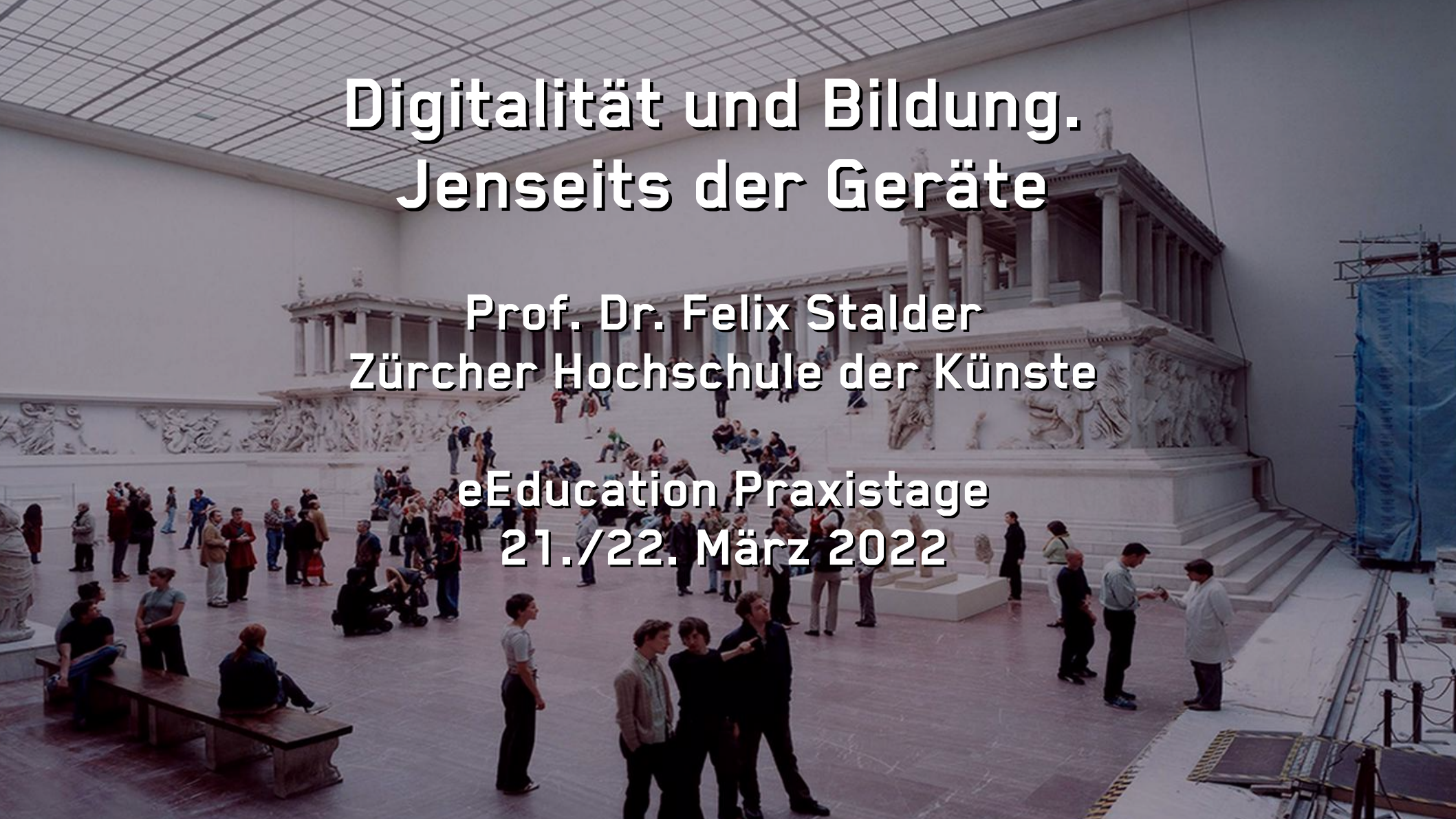


Digitalität und Bildung. Jenseits der Geräte

Prof. Dr. Felix Stalder
Zürcher Hochschule der Künste

eEducation Praxistage
21./22. März 2022



A complex network graph with nodes and edges in various colors and sizes. The nodes are represented by circles of different diameters and colors (blue, red, green). The edges are thin lines connecting the nodes, with some thicker lines indicating stronger connections. The overall structure is dense and interconnected, with a prominent diagonal path of thick blue lines.

Bildung ≠ Ausbildung

A world map is shown in a dark blue color, with the continents highlighted in a lighter blue. Overlaid on the map is a complex network of white lines and dots, representing a global network or data flow. The text "Digitalisierung ≠ Digitalität" is centered over the map in a bold, white, sans-serif font.

Digitalisierung ≠ Digitalität

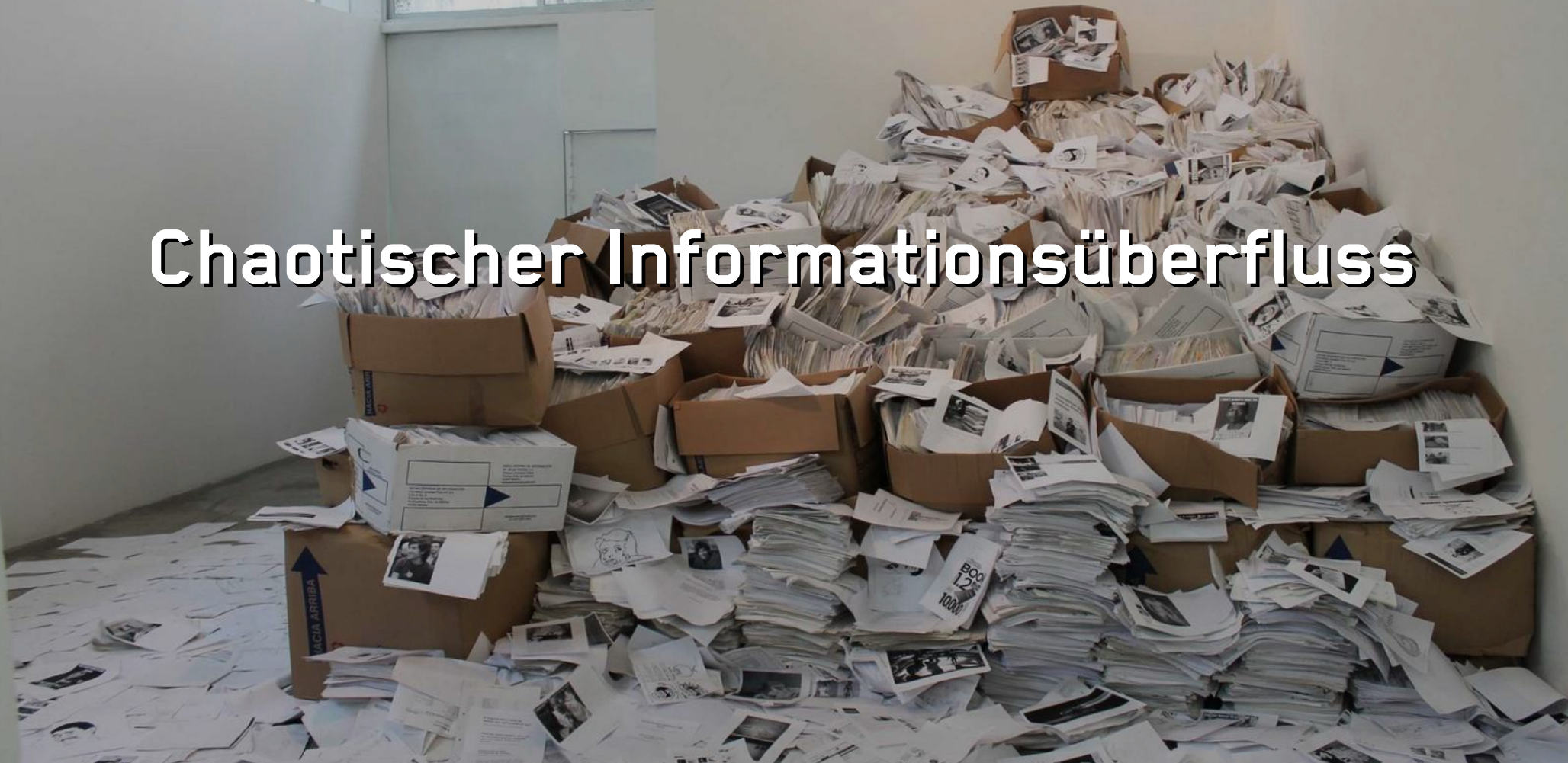
A young boy with dark hair is seated at a dark wooden desk, focused on his work. He is wearing large, black over-ear headphones. In front of him is a silver laptop with the Apple logo on the lid, and an open book lies on the desk. He is pointing his right index finger upwards, looking intently at the laptop screen. The background shows a simple room with a framed picture on the wall and a doorway leading to another room.

**Pandemie:
Digitalisierung der Ausbildung**

Bildung: breitgefasst



Chaotischer Informationsüberfluss



An aerial night photograph of a massive crowd gathered in a city square. The crowd is dense and fills most of the lower and middle portions of the frame. In the background, a large building with a prominent rainbow-colored facade is illuminated. The city skyline is visible in the distance under a dark blue twilight sky. The text "Breite historische Veränderung: aus 'mehr' wird 'anders'" is overlaid in white, bold font across the center of the image.

**Breite historische Veränderung:
aus "mehr" wird "anders"**



“Wissensökonomie”



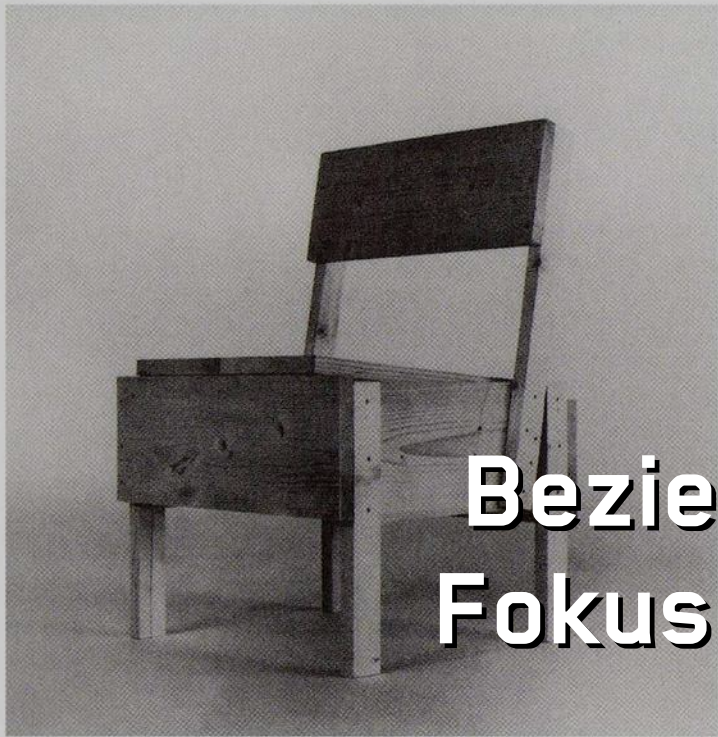
Erweiterung des Designs

XII-'53

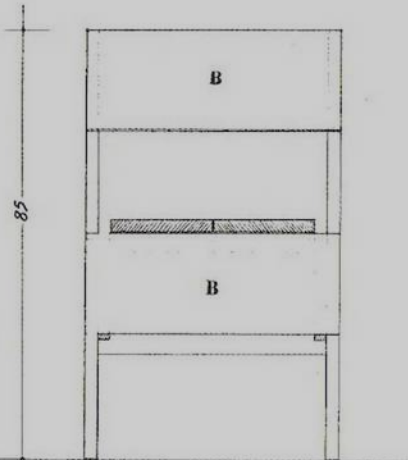
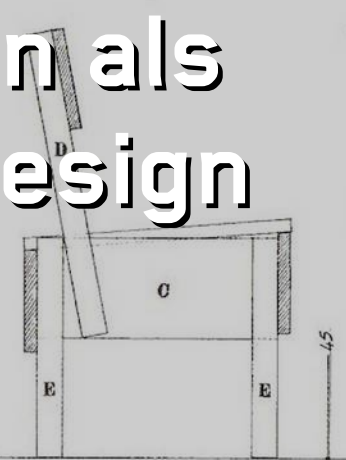
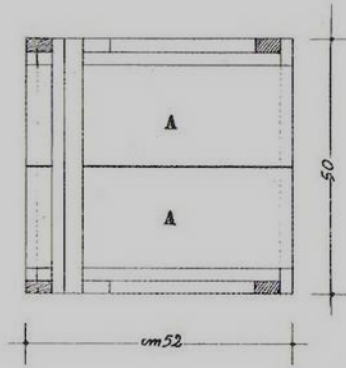
MLB



**Objekt als Fokus
des Design**



Beziehungen als Fokus des Design



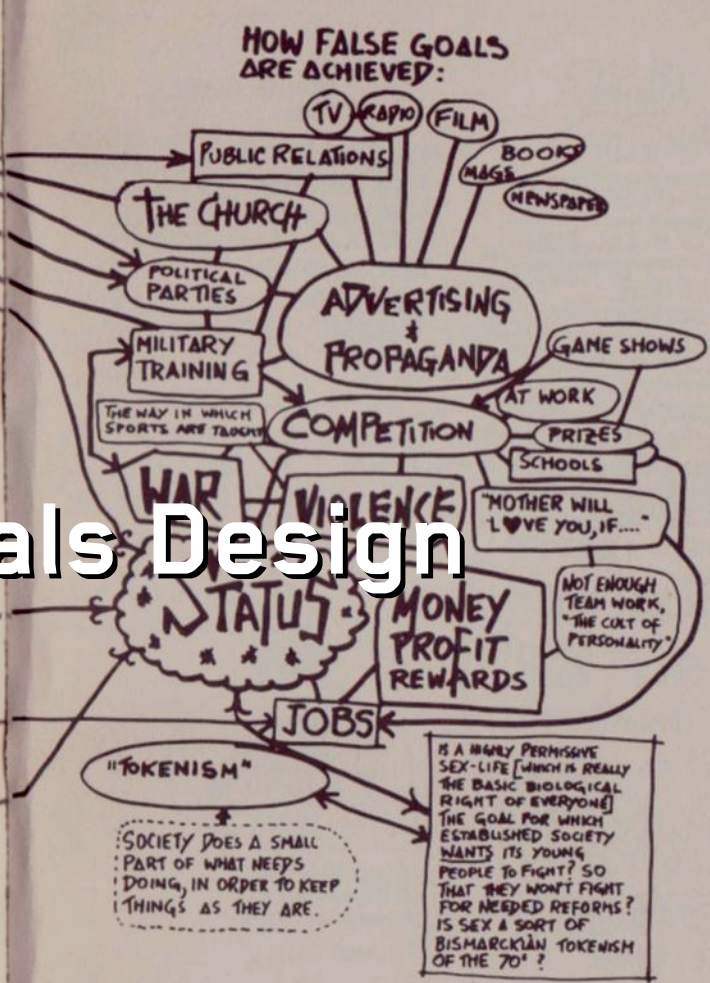
TAVOLETTE OCCORRENTI

SEZIONE	LUNGHEZZA	QUANTITA'
A	20x2,5	52 2
B	"	50 3
C	"	47 2
D	5x2,5	61 2
E	"	44 4

1123 xP	SCALA 1:5	5/73
SEPIA		
ENZO MARI PIAZZALE BARACCA 10 20123 MILANO TELEFONO 4693651		



Gesellschaft als Design



Erfahrungen als Design





Die Stadt als Designaufgabe

Gene als Design



An aerial photograph showing a city and a large open-pit mine. The city is in the foreground, with a grid of streets and buildings. To the left, a large, circular open-pit mine is visible, with a dark lake in the center. The background shows a vast, green landscape with a river and some industrial areas. The sky is blue with some clouds.

Anthropozän: die Erde als Design

Weltraum als Design



A woman with long dark hair, wearing a white lace dress, is performing on stage. She is holding a microphone and has her mouth open as if singing. Her right arm is raised, and her left arm is extended to the side. The background is a stage with warm, orange lighting and several circular spotlights. A large, dark, cylindrical object is visible in the foreground on the right side.

Soziale Liberalisierung & Wertpluralismus



Globalisierung



**Ausweitung des sozialen
Basis der
kulturellen Produktion**



Zu viel ist das neue Normal

Krise der etablierten Öffentlichkeiten

"All the News
That's Fit to Print"

No. 54, 2027

Is Confidence
in Risk



Do women have to be naked to get into the Met. Museum?

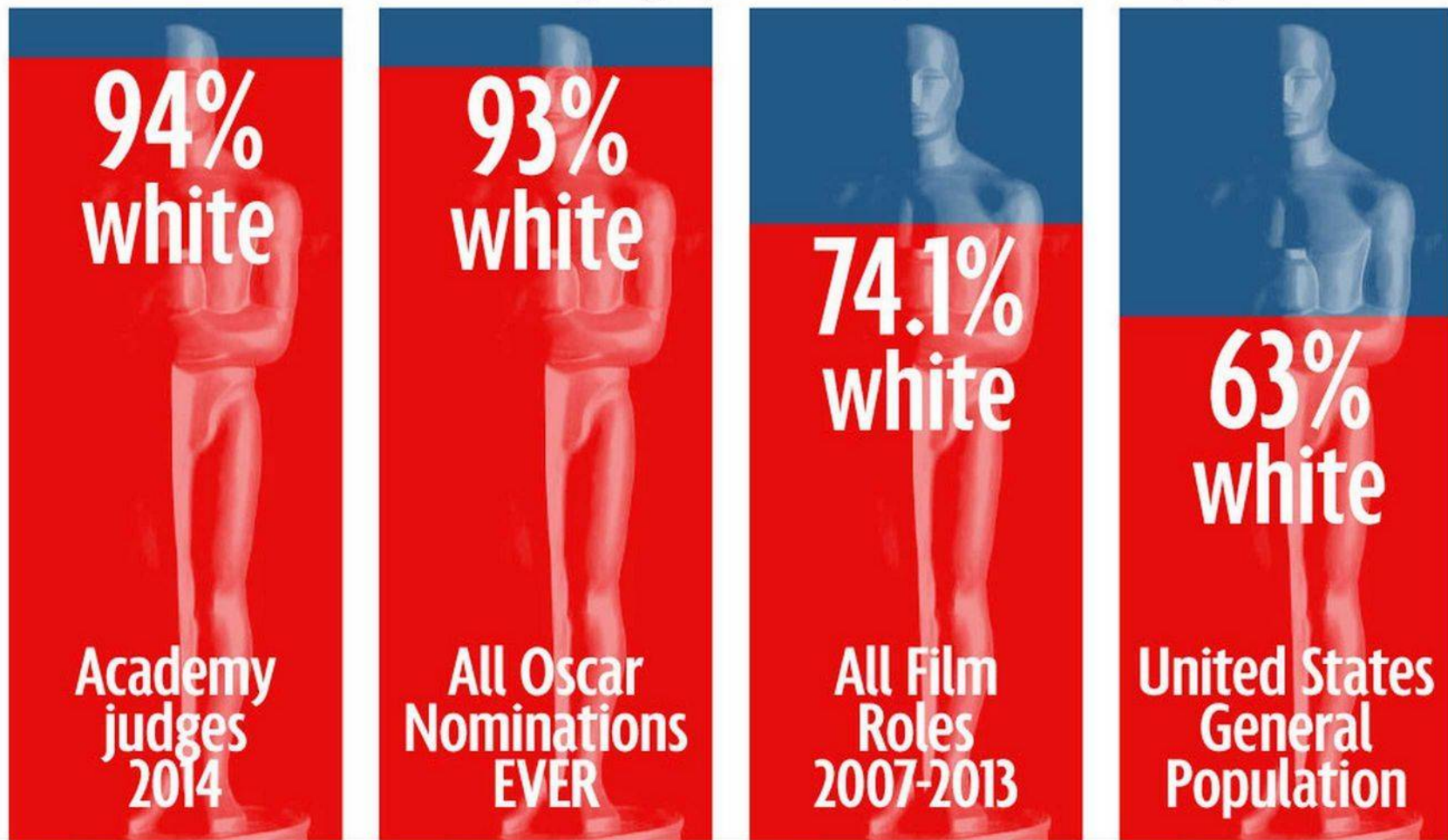
Less than **4%** of the **artists** in the Modern Art sections are women, but **76%** of the **nudes** are female.

Statistics from the Metropolitan Museum of Art, New York City, 2011

GUERRILLA GIRLS CONSCIENCE OF THE ART WORLD
www.guerrillagirls.com

“WHAT COLOUR DO I HAVE TO BE TO GET AN OSCAR?”

Ethnic breakdown of Oscar judges, nominees, actors and US population



Data: LA Times, USC, US Census

Art History Department to scrap survey course

MARGARET HEDEMAN & MATT KRISTOFFERSEN | 12:31 AM, JAN 24, 2020

STAFF REPORTERS



WIR SIND MÜNDIG
FÜR ECHTE DEMOKRATIE
KEINE LÜGENPRESSE
KEIN IMPFZWANG



An aerial photograph of a highly complex, multi-level highway interchange. The image shows a dense network of concrete and asphalt roads, with multiple levels of overpasses and underpasses. The roads are filled with small cars, and the overall structure is a chaotic yet organized web of lines. The text "Neue Ordnungen" is overlaid in the center in a white, sans-serif font.

Neue Ordnungen



Referentialität



tussenkunstenquar · [Abonnieren](#) ...



tussenkunstenquarantine Chique plee art 🙌
#tussenkunstenquarantine
@koninklijkeverzamelingen

56 Wo.



ariana.salguero What's the name of the original painting?

51 Wo. Gefällt 1 Mal Antworten



fdvw73 🍷

51 Wo. Antworten



jessicacarpenter0805 What is the



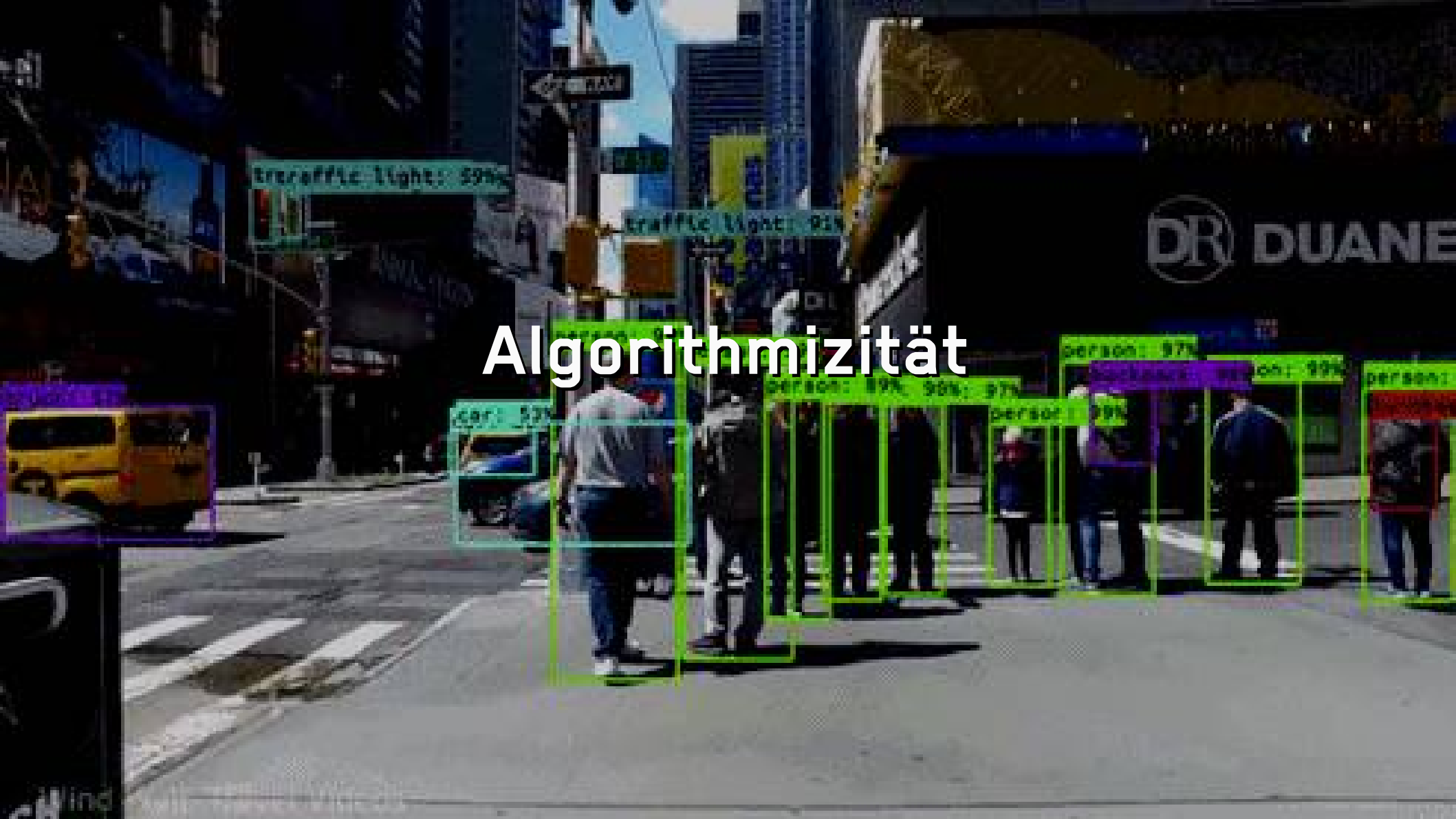
Gefällt 6.332 Mal

21. MÄRZ 2020

Gemeinschaftlichkeit



Algorithmizität




A photograph of a person's right arm raised with a clenched fist, set against a plain white wall. In the background, a white door with a grid pattern is visible. The lighting is bright, creating a high-contrast scene. The word "Alltagskultur" is overlaid in white text with a black outline.

Alltagskultur



Bildung und Digitalität

A large school of blue fish swimming in a dark blue-green ocean. The fish are densely packed and moving in a coordinated pattern, creating a sense of movement and depth. The text is overlaid in the center of the image.

**Referentielle Handlungen:
Suchen, Bewerten, Verknüpfen**

Gemeinschaftlichkeit

Es gibt nie nur einen Blickpunkt



A woman with dark curly hair and large colorful earrings is shown from the chest up. Her face is the central focus, overlaid with a digital face recognition grid. The grid consists of red dots connected by thin blue lines, forming a mesh that tracks facial features. A white rectangular frame is superimposed on the image, framing the woman's face. In the background, there are several sheets of paper with faint, illegible text and diagrams. One sheet in the lower-left corner has the text "FACE DETECTED" in a light blue font. The overall scene suggests a high-tech or artificial intelligence environment.

Algorithmizität: Die Maschine verstehen

FACE DETECTED



**Digitalität:
Wechselnde Verknüpfungen, nicht
Technologie**